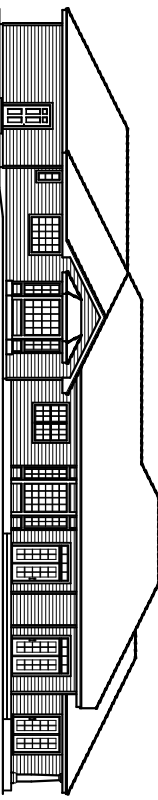
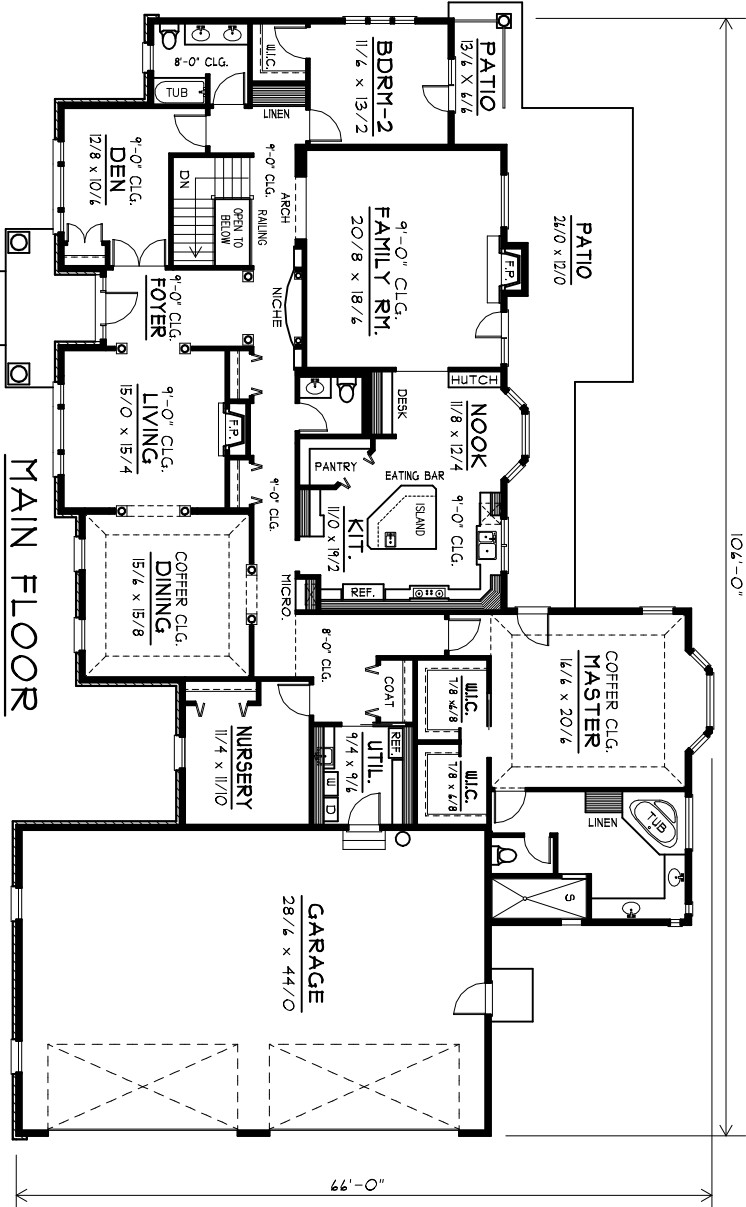


FRONT ELEVATION



REAR ELEVATION

- Large Doric columns and stone quoins highlight the entrance to this attractive home.
- The spacious Foyer features a built-in granite countertop and columns with arched niches on each side.
- Nine foot ceilings provide volume throughout most of the living areas.
- The Kitchen includes a large island with an eating bar, plenty of cabinets and counter space, a desk area, and a huge walk-in pantry.
- His and Her walk-in closet space, double sinks, a corner tub, and a walk-in shower top off the Master which includes a bay window and coffer ceiling.
- The unique stairway draws the basement into the main floor.
- The Den can serve as a Guest Room and is located near the private second Bathroom and full Bath.
- An unfinished Partial Basement provides lots of room for future plans.

The Booker

Plan No. 3506R1-PB	Total Finished
Main Floor 3506 Sq. Ft.	3649 Sq. Ft.
Finished Basement 143 Sq. Ft.	
Unfinished Basement 2132 Sq. Ft.	Bedrooms
Garage 1315 Sq. Ft.	4
Exterior Walls 2"x6"	Baths
Price Code: H	2-1/2
Foundation: Basement	
Options (\$100.00 EA.):	
Crawl Space, Slab	

Residential Designs, Incorporated