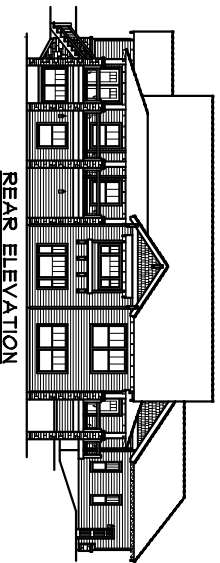


FRONT ELEVATION

93'-10"



REAR ELEVATION

89'-5"

- 10' ceilings throughout main floor with beautiful vaulted great room, study, and master.
- Private deck access from master bath room.
- Double ovens, eating bar, and walk-in pantry are the kitchen features.
- 3 car garage provides additional stairway to the basement.
- Basement has 9' ceilings with huge storage room.

The Cochran

Plan No. 2300R1-DB

Total Finished

Main Floor 2500 Sq. Ft.

4219 Sq. Ft.

Finished Basement 1719 Sq. Ft.

Unfinished Basement 752 Sq. Ft.

Bedrooms

Garage 1069 Sq. Ft.

4+1

Exterior Walls 2"x6"

Baths

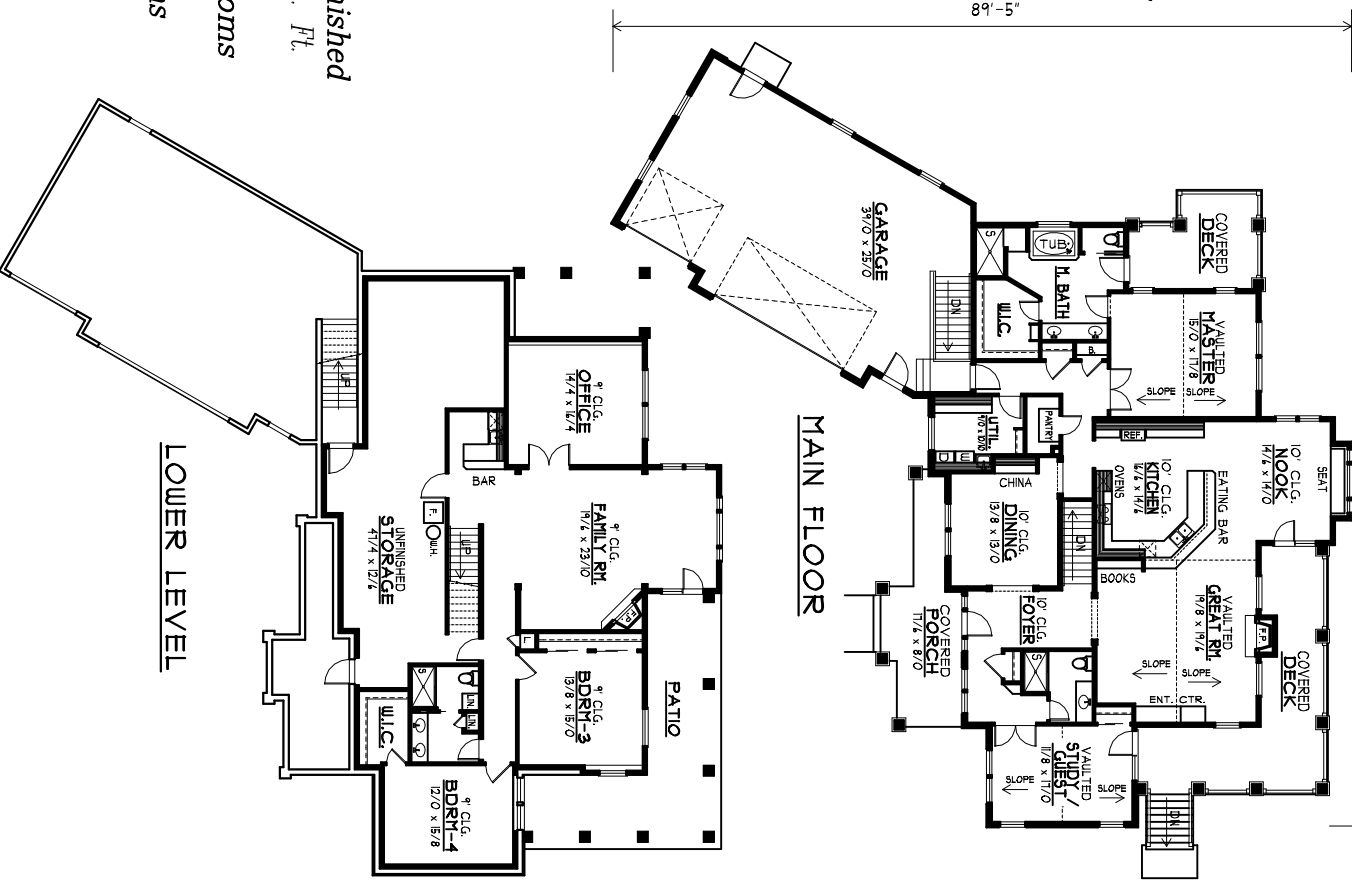
Price Code: H

3

Foundation: Daylight Basement

Options (\$100.00 EA.):

Basement, Crawl Space, Slab



Residential Designs, Incorporated

© 2005